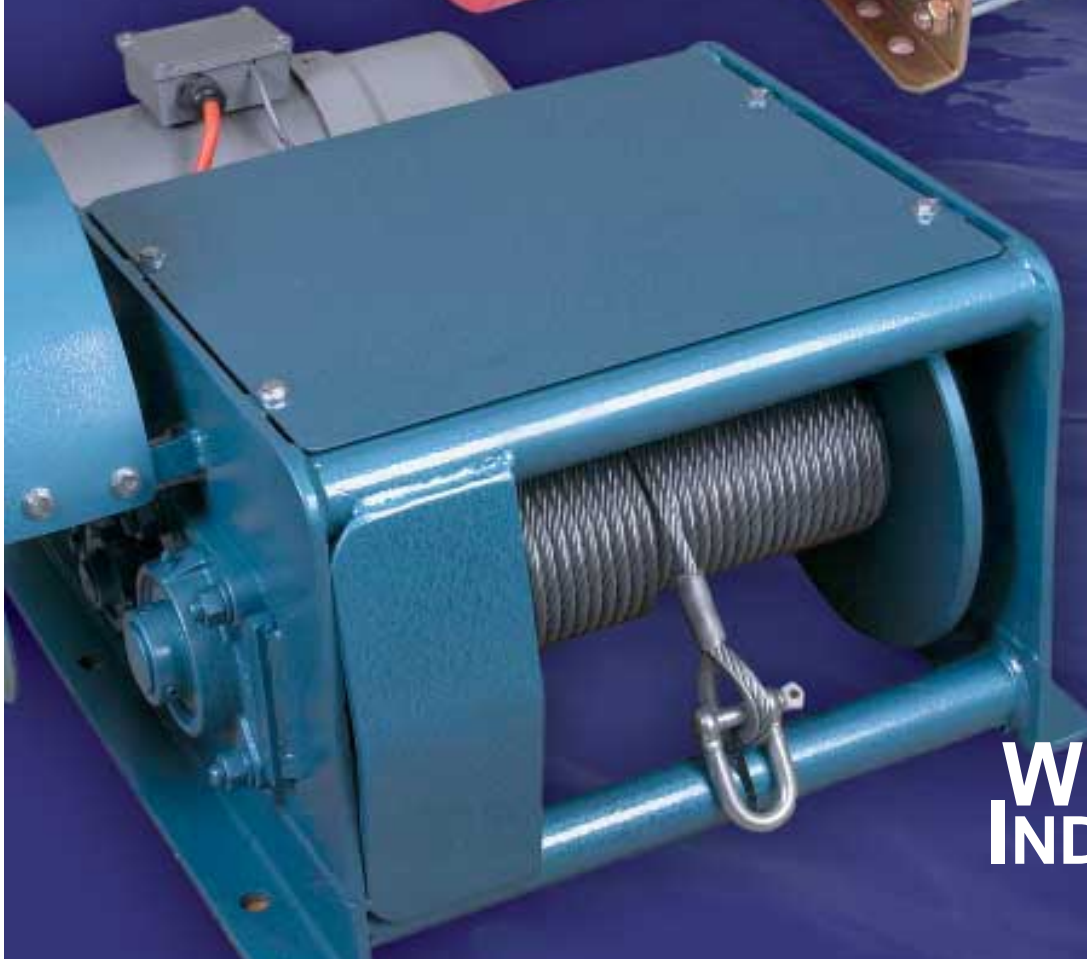


# BOAT RAMP WINCHES

[www.winch.com.au](http://www.winch.com.au)



AUSTRALIAN OWNED  
AND FAMILY RUN

**WINCH  
INDUSTRIES**  
Pty Ltd



# TIGER WINCHES

Our Tiger range of winches are all of the planetary design, rugged in construction and engineered to exacting standards. The Tiger is light weight and incredibly strong. Built with a precision two stage planetary gear box, they feature quality roller bearings throughout.

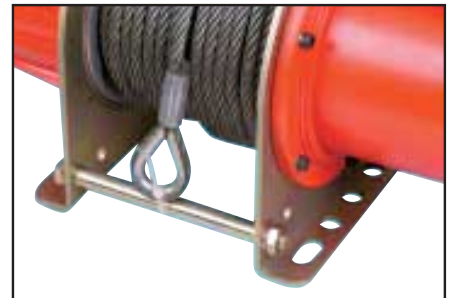
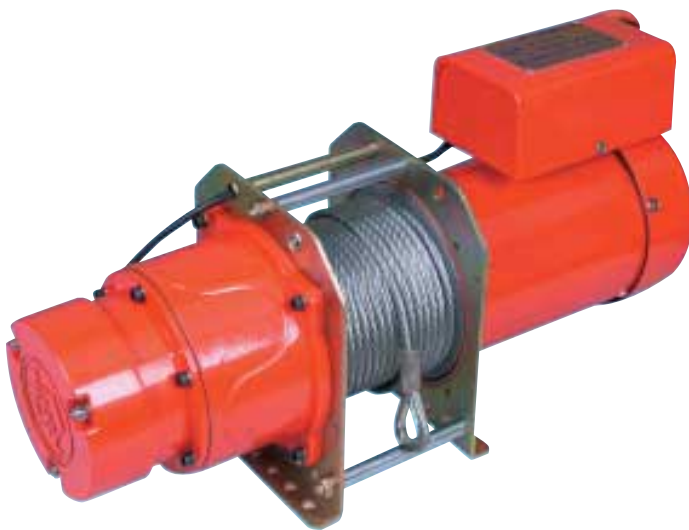
The Tiger winch is supplied with a high starting torque motor, designed and manufactured specifically for hauling and hoisting applications.

## QUICK GUIDE TO TIGER WINCHES

SLOPE Ramp Gradient		MODEL F05-20	MODEL F05-25	MODEL F06-30
(1:12)	5°	2200 kg	2750 kg	3250 kg
(1:4.5)	12.5°*	900 kg	1100 kg	1300 kg
(1:3.75)	15°	750 kg	950 kg	1100 kg
(1:2)	27°	400 kg	500 kg	650 kg

\* Standard boat ramp angle

Note: Based on rolling load over good quality surface.



Easily mounted

## STANDARD FEATURES

- 30m of wire rope with safety hook
- Average line speed 10m per minute
- Weight approx 35kg
- Forward and reverse pendant control, 3m lead with 3 pin plug
- Optional radio remote control
- Optional 24 volt hand control

## APPLICATIONS

- Boat ramps
- Small workshops
- Crane and lifting
- Home handyman
- Positioning caravans or large trailers in confined areas
- Lifting sillage pumps
- Ideal for building sites
- Industrial bin retrieval
- Agricultural environments, water pump installation and removal



For added safety and piece of mind, they are constructed with a fail safe electro magnetic disc brake which provides safe, easy load control. Tiger winches are extremely compact, user-friendly and require minimal servicing.

All units are supplied with rope, safety hook, pendant control and are prewired. We are confident these dynamic units will exceed your highest expectations and provide years of service. Alternative models are available to suit your requirements.

# BLUE SERIES WINCHES

## MODEL : AM1026B

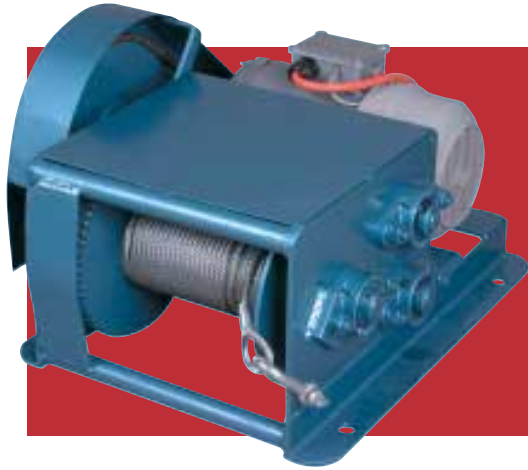
Quality steel cut gears and shafts

### STANDARD FEATURES

- All steel machine cut gears
- 0.75kw 240v Electric motor
- Automatic fail safe brake
- Greasable ball bearings
- Forward and reverse pendant control, 3m lead with 3 pin plug
- 30m of 6mm dia aircraft cable
- Max winch drum storage capacity 70m of 6mm aircraft cable
- Optional 24 volt hand control
- Optional remote control

### SPECIFICATIONS

Ratio:	87 : 1
Average line speed:	4.6m/min
Capacity:	3600kg on wheeled trailer up 12 1/2° ramp
Weight:	60kg
Dimensions:	420mm wide x 560mm long 320mm high



This range of winches is manufactured in Australia, with the majority of the components machined in our own workshop. This guarantees availability of replacement parts and quality of service. We also use Australian manufactured CMG brand electric motors, renowned for their strength and reliability.

The range boasts steel frame, steel shafting and strengthened K1045 steel machine cut gears for added strength and longer life. These features all contribute to a product range that is incredibly reliable, efficient and strong.

We have been selling these particular winches for more than 25 years and most are still in service today.

### QUICK GUIDE TO BLUE SERIES WINCHES

SLOPE Ramp Gradient		MODEL AM1026B	MODEL AM2026B
(1:12)	5°	8000 kg	15000kg
(1:4.5)	12.5°*	3600 kg	7000 kg
(1:3.75)	15°	3000 kg	5750 kg
(1:2)	27°	1800 kg	3600 kg

\* Standard boat ramp angle

Note: Based on rolling load over good quality surface.

## MODEL : AM2026B "THE BIG BROTHER"

### STANDARD FEATURES

- All steel machine cut gears
- 1.7kw 240v electric motor
- Automatic fail safe brake
- Greasable ball bearings
- Forward and reverse pendant control, 3m lead with 3 pin plug
- 30m of 8mm dia aircraft cable
- Max winch drum storage capacity 70m of 8mm aircraft cable
- Optional 24 volt hand control
- Optional radio remote control

### SPECIFICATIONS

Ratio:	126 : 1
Average line speed:	4.6m/min
Capacity:	7000kg on wheeled trailer up 12 1/2° ramp
Weight:	110kg
Dimensions:	520mm wide x 760mm long 375mm high

Quality workmanship guaranteed



# MANUFACTURING



Manufacturers of a comprehensive range of production winches for the tow truck, tilt tray and recovery market.

Winches to suit marine, boat ramp and crane applications.

Replacement parts for 'out of production' winches that may be difficult to source or simply no longer in production.

Specialists in the manufacturing of bevel gears, worm wheels and worm shafts, helical and straight cut spur gears, large sprockets, rack cutting, internal and external splines, slotting, gear tooth grinding, thread milling and thread grinding.

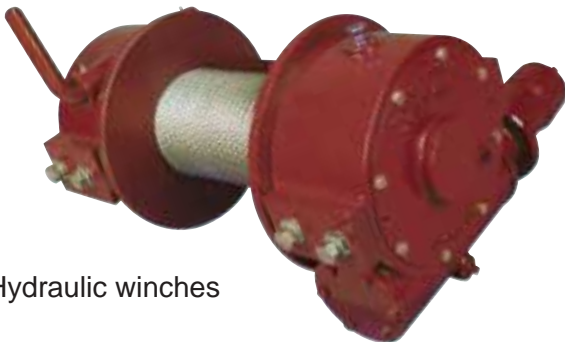
# RECONDITIONING

Servicing, reconditioning and spares for most name brand winches, including Garwood, Ramsey, Tulsa and the Canadian Pullmaster Range.

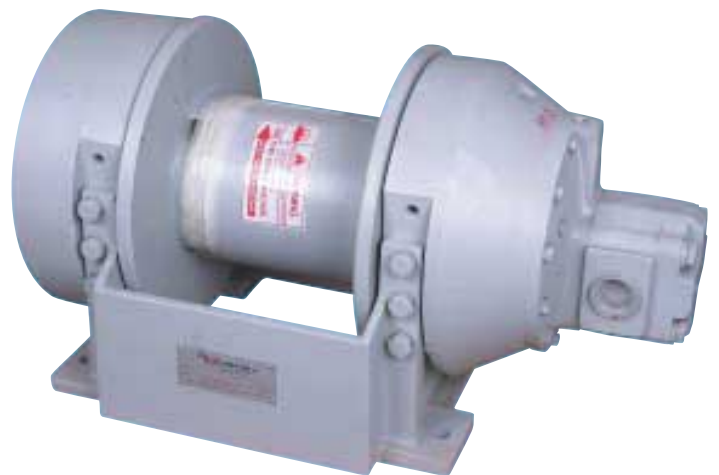
Off the self parts available for **Thomas** and **A.P.E.** winches.



12 & 24 Volt Electric Winches



Hydraulic winches



Pullmaster

Your nearest Winch Industries Distributor is:



Winch Industries Pty Ltd

2 Coin Street,  
Moorooka, Q, 4105  
PO Box 206,  
Acacia Ridge, Q, 4110  
Ph: (07) 3875 1568  
Fax: (07) 3277 4316  
[www.winch.com.au](http://www.winch.com.au)